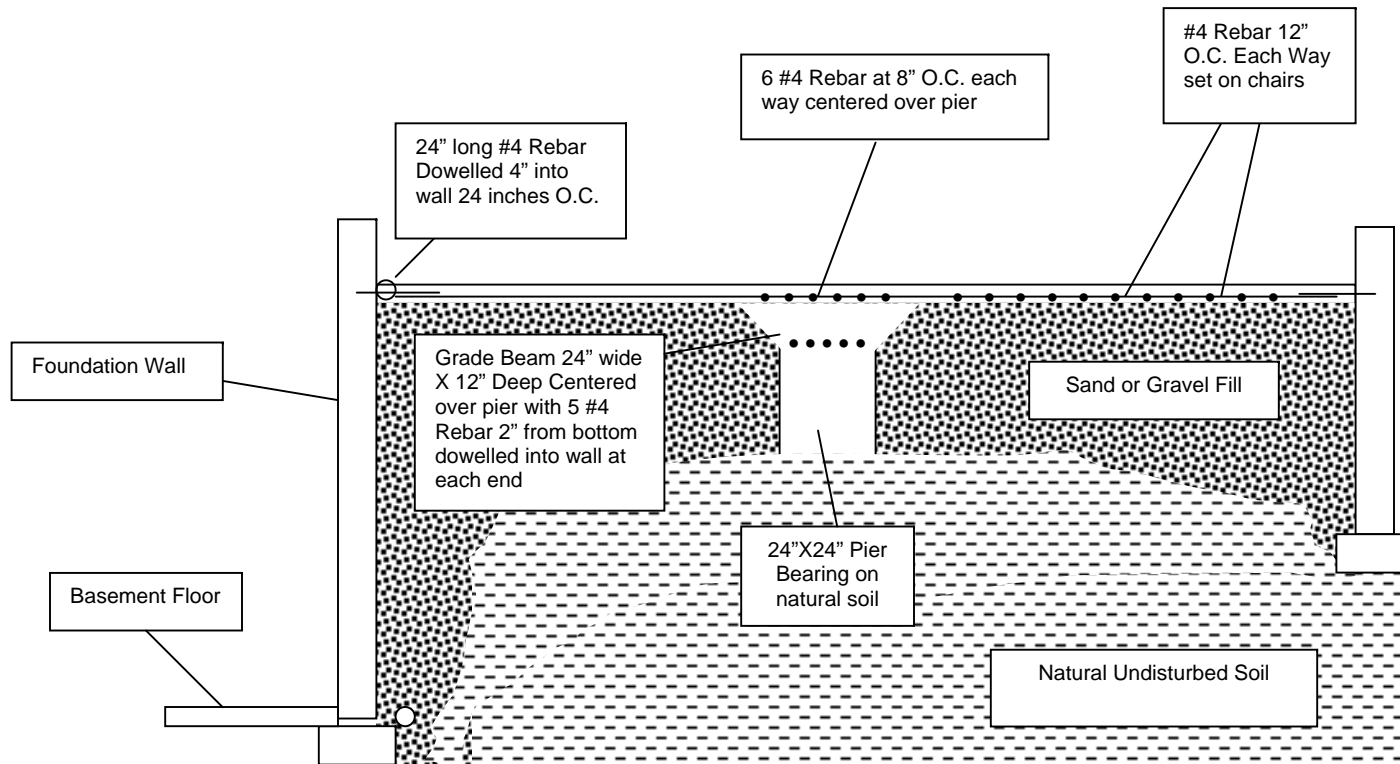
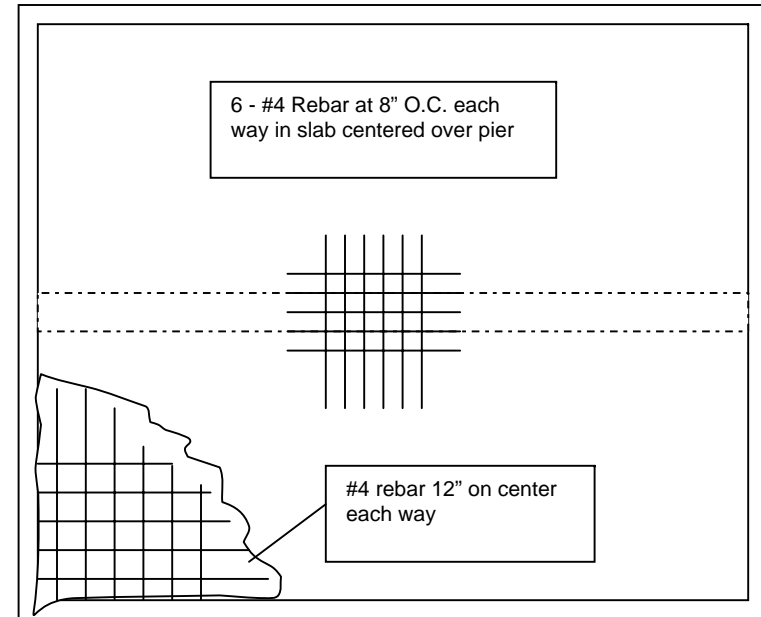
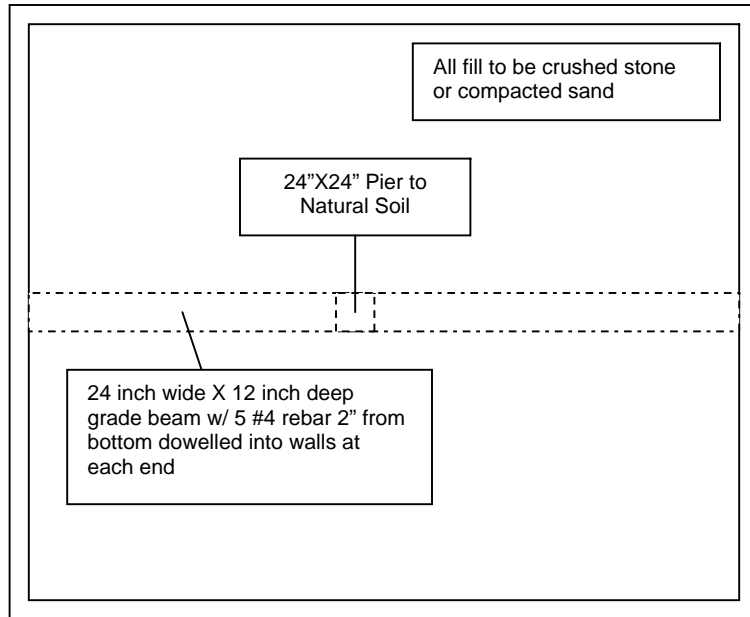


MIAMI COUNTY REQUIREMENTS FOR GARAGE FLOOR ON FILL

Enforcement will begin on January 1, 2005



MIAMI COUNTY REQUIREMENTS FOR GARAGE FLOOR ON FILL



NOTES:

1. Pier dimensions shall be increased if supporting column transferring additional loads from house.
2. Floor slab shall be minimum 5" thick with minimum 3,500 lb mix.
3. Splices in rebar to be lapped minimum of 1'.
4. Vertical and horizontal reinforcing in walls shall be on minimum 24 inch centers.
5. If any dimension of slab exceeds 24 feet additional piers and grade beams shall be provided and be equally spaced.
6. Engineers Design will be accepted as alternative method.